



PAUL K. LONGMORE

Institute on Disability



Annual Report
July 2022 - June 2023

Cover Photo – Nathan Burns, our Longmore Student
Fellow, graduates with honors from SFSU Spring 2023.

Table of Contents

Our Core Staff	2
Director's Report	3
Celebrating Disability at San Francisco State University	4
Longmore Student Fellows	5
Superfest Disability Film Festival	6-7
Disability Culture Online	8-9
Other Programs	10
Budget	11
Donors	12-13
Support Longmore Institute	14

Our Core Staff



Shaina Ghuraya
Access and Events
Coordinator & Superfest
Co-Director



Emily Smith Beitiks
Interim Director



Alex Locust
Emerge Project Director

Longmore Advisory Council



Thank you to our advisory council:

Matthew S. Alaniz, Dana Bolles, Eugene Chelberg, Anne Finger, Trevor Getz,
Kathy Martinez, Milton Reynolds, Danny Thomas Vang, and Sally Vitello.

Director's Report

This year at the Longmore Institute can be summed up in one word: “growth”...

We hosted our first-ever hybrid Superfest with two different in-person venues and all films simultaneously available to our at-home viewers near and far. We welcomed new programs and collaborations like our Mellon-funded Emerge workshop and our Tiger Talk Series with the Disability Visibility Project and Disability and Intersectionality Summit. We expanded our core staff by hiring Alex Locust to direct the Emerge Program and Shaina Ghuraya as co-director of Superfest and Access & Events Coordinator. We supported our largest number of Longmore Student Fellows yet - 16!

But growth doesn't always come easy or necessarily mean forward progress. For example, we deepened our understanding of the context in which the Longmore Institute works at San Francisco State University. Low enrollments have created a climate of scarcity, hurting our fight for a new permanent director. In addition, hosting our first Emerge cohort on our campus exposed many shortcomings in our ability to promote disability justice inside an academic institution.

Reflecting on this year of growth reminded me of one of my favorite Vonnegut quotes: “The problem with humanity is that everybody wants to build, and nobody wants to do maintenance.” It is easy to forget that maintenance - that evaluation, recalibration, and repair - can be a form of growth, even if sometimes it doesn't feel like it. Just like gardening is only 1% harvest and mostly weeding and watering, so is the work ahead for the Longmore Institute this year.

As we plan for next year, there will be new opportunities and projects. Still, we will continue to do maintenance, strategize what the Longmore Institute's mission looks like inside this moment at our university, and plan for a sustainable future. Fighting ableism through disability culture and community is a long-term game; we will continue to show up for it.

In solidarity,
Emily Beitiks
Interim Director

Celebrating Disability at San Francisco State University:

- After ten years of working toward establishing a **Disability Studies Minor**, the Longmore Institute collaborated with a network of faculty, and a minor program has finally been submitted for review to begin Fall 2024.
- We **shared expertise in disability studies and accessibility** by collaborating with and providing trainings for the Disability Programs and Resource Center, The Center for Equity and Excellence in Teaching and Learning, Enrollment Management, the Queer and Trans Resource Center, and SFSU's Chairs Council, as well as guest lecturing in Comic Studies, Women and Gender Studies, Health Education, and Special Education.
- We continue to serve as faculty sponsors and offer material support and space for **DREAM, the disability student group on campus**. Following Director Andrea Northrup's graduation in December, DREAM continues with new leadership. DREAM has worked to support and build a disability community on campus through hosting events and collaborations and joining the Disability Minor Committee and the All-University Committee on Disability.

Some of our Longmore Student
Fellows from AY 2022-2023



Longmore Student Fellows

Our most significant impact on SFSU's campus is the close relationships we build while mentoring disabled students.

Thanks to our many donors who contribute to the Longmore Student Fellows program, the last ten years have supported 67 Longmore Student Fellows, 82% of whom identify as disabled and BIPOC, queer, women, and/or gender-expansive. Thanks to our one-time gift from Anthem Blue Cross to provide \$10,000 scholarships and mentorship for ten SF State disabled students pursuing careers in healthcare, plus our six Longmore Fellows, this year allowed us to have our biggest cohort of fellows yet!



"The Longmore Institute's student fellowship has served as an important turning point in my life. I have not only gained experience, I learned what an empathetic and accommodating work environment feels like, leaving me more empowered to advocate for this type of work environment in the future."

~ Baylee Van

"I now hold perspectives that I will, in turn, contribute and introduce to my community that could revolutionize the support of disabled health care practitioners."

~ Bernadette Richard



"Beyond the funding, my outstanding peers, who have also been selected to receive this incredible scholarship, have provided me with the absolutely priceless gift of community, validation, and fellowship. Led by Emily, we've been able to come together, make beautiful connections, and hold space for one another during difficult times."

~ Iyah Turminini

"One of the reasons I applied to SF State for grad school was the Longmore Institute and it will always be my favorite part of the university. Being both a 5A Fellow and a Student Scholarship Fellow has given me the support, community, and knowledge to continue developing my disability activism skills. These experiences have been invaluable and will forever impact me and the work I do moving forward."

~ Angela Evanich



SUPERFEST DISABILITY FILM FESTIVAL



Learn more at:
superfestfilm.com

Our 36th Superfest took place this last October, which also served as our first year hosting the festival in a hybrid format!

“[It] was fantastic to learn more about filmmaking that is happening across the world in diverse disability communities. I appreciated the hybrid platform as a model. Excellent!”

“I find Superfest to be so transformative to view a diverse array of folx with disabilities as actors, heroes, and lovers. It’s such an important way to break down barriers of structural ableism. I struggle with mental health stuff, and it’s important for me to see others in film who aren’t the villains who have mental health stuff.”

“Not only was this my first film festival, it was the first time I saw a film featuring disabled persons without ableism entrenched. The learning and depth of the movies was amazing. To be honest, regular films have been incredibly boring for me, and this festival renewed my interest in film.”

Here are some statistics from 2022’s Superfest.

- 20 short and feature-length films were showcased, selected from 267 submissions from 34 countries, all with audio descriptions and captioning.
- Our in-person programs hosted 230 people, and our virtual program had 468 unique attendees.
- Total attendee screening time on the virtual platform amounted to a cumulative two months, 11 days, 15 hours, and 13 minutes.
- Watch parties across the US reached over a hundred additional viewers.
- Over 95% of attendees said they hope to return next year.
- 62% of attendees received comp tickets, showing our dedication to bringing Superfest to our community, regardless of their ability to pay.

“Absolutely incredible - the most meaningful festival I’ve attended with my film by far!!”





Stills from our 2022 films

We hosted Superfest Showcases with:

- Universities: UCSF, Indiana U, Stanford, CSU East Bay, San Diego State University
- K-12: Alvarado E.S., Lakeshore E.S., Presidio M.S., Basis H.S.
- Public Libraries: Sacramento, Cupertino
- Conferences: Pac Rim, Telecare Annual All-Team
- Inside other film festivals: Together Film Festival, Access: Horror
- And more, to extend our audience reach by thousands.

The following supporters made this year’s festival possible:

- Lead Sponsor: Sally Vitello, Telecare Corporation, and Wells Fargo
- Super Star donors: Pixar Studios
- Gold Sponsor: Golden Gate Regional Foundation
- Foundation support: The Ford Foundation, Hobson/Lucas Family Foundation, and DiCapta Foundation
- In-kind support: The Asian Art Museum, Social Audio Description, The College of Liberal and Creative Arts at SFSU, the Disability Programs and Resource Center SFSU.

Looking forward to Superfest 2023:

We look forward to continuing our festival in a hybrid format, with online access complementing our in-person days in Berkeley (at the Freight and Salvage, October 21) and San Francisco (at the Asian Art Museum, October 22). Join us at superfestfilm.org



Disability Culture Online

We continued to promote conversations that center scholar-activism through online programs and collaborations. Some of these programs included:

- A series of community conversations with writers and creatives to celebrate the launch of Alice Wong's new memoir, **Year of the Tiger**, in collaboration with Disability Visibility Project and the Disability and Intersectionality Summit. The six-event "Tiger Talks" series had a **combined 3,225 registrations**.
- Our second year of hosting monthly "**Cafe Crip**" community gatherings, moderated by Bianca Laureano, on dating, grieving, comedy, mentorship, and more.
- The second installment of our collaboration with Project HEAL for a program on **Disability Justice and Eating Disorder Treatments**.
- Our annual Longmore Lecture in Disability Studies—"When's the last time you heard a funky diabetic? A Queer Crip Sex Archival Project"—featured Bianca Laureano. The event occurred in a hybrid format at SFSU in collaboration with the Women and Gender Studies department.

Testimonials:

"The camaraderie, how much I learned, *hope* (!!!) - reminding me it can still be found, the exchanges between all of the panelists has been lovely."

- Tiger Talks Attendee

"Loved exploring a new topic studied with such rigor - validates our community, gives it depth complementing the breadth of experience we get from Cafe Crip."

- Longmore Lecture Attendee

"I loved my breakout small group, and I am wildly excited about learning the term "disability/crip doula." I feel like it immediately opened up something inside me, like OH YES, THAT."

- Cafe Crip Attendee

"This was such a magical experience. I enjoyed listening to folks speak to their various experience, asking questions, the engagement with my comments/questions, and the overall vibe of this community. I appreciated the care and respect w/ which this discussion was held and the immense generosity/sharing of resources from folks."

- Cafe Crip Attendee

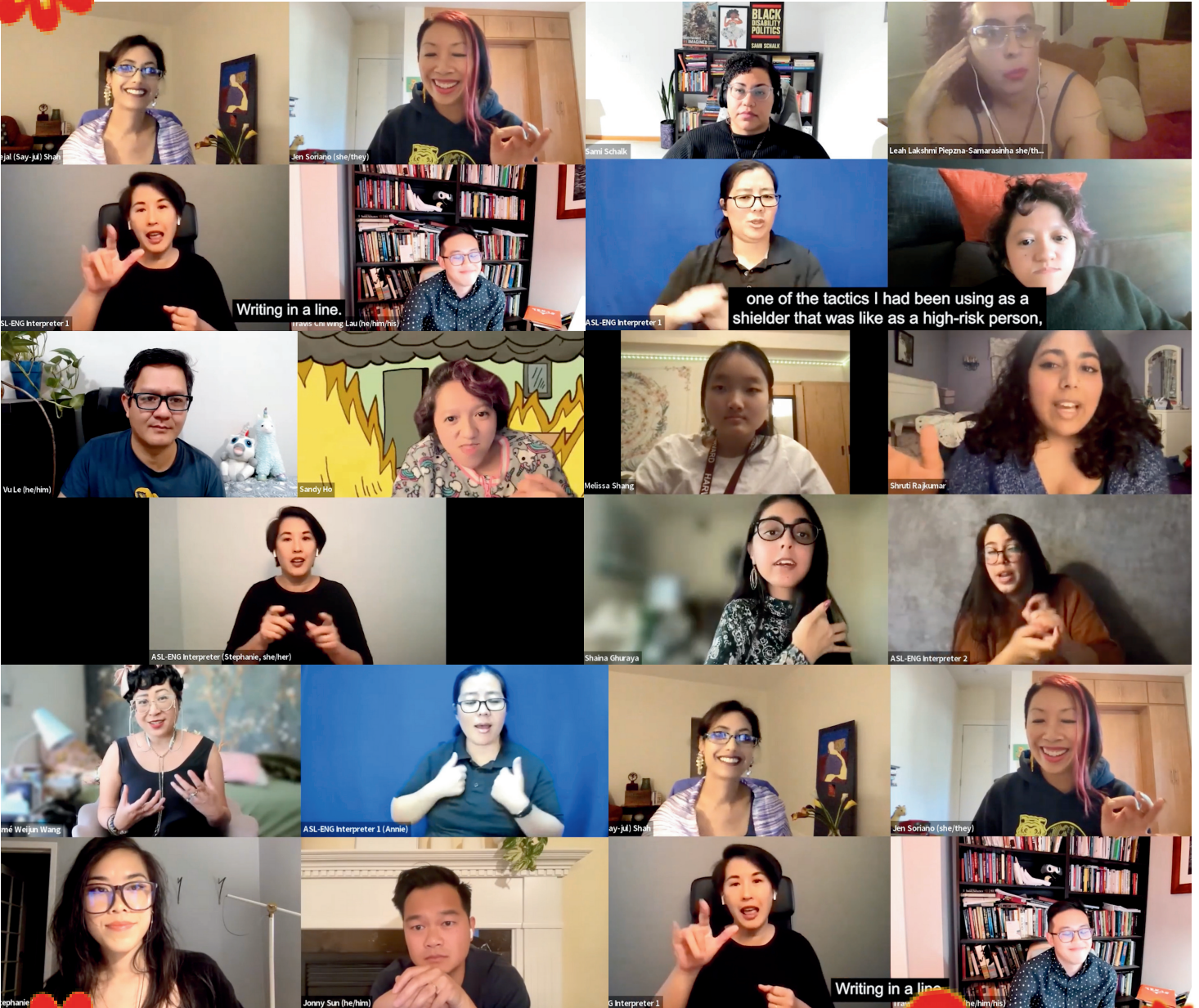
"I appreciated how the speakers came to the conversations fully and unapologetically themselves. It made me feel welcome in the space and excited to learn."

- Tiger Talks Attendee

"Being in a supportive, well-facilitated disability justice space that is loving and affirming and thought-provoking - this series gives me life and helps me on the hardest days."

- Cafe Crip Attendee

TIGER TALKS



Other Programs:

Emerge:

With a generous \$1 million grant from the Mellon Foundation, we were beyond excited to announce our new Emerge Fellowship project, a three-year initiative focused on uplifting and supporting disabled scholars, activists, and artists whose work is enriching the field of disability studies. From 310 distinct applications, we selected 11 Fellows for our inaugural cohort: T.S Banks, Mia Charnelle, Bowen Cho, thai lu, Allison Masangkay, Ebony Oldham, Rise, Natasha Thomas, Isabella Vargas, Lou Weaver, and Zee Xaymaca.



Patient No More:

PNM's refurbishment, thanks to our exhibition partner Exhibit Envoy, allowed it to travel to Utah, Nebraska, and Minnesota, with four more visits planned for next year. We continue to serve as a liaison to help connect 504 protestors to journalists and scholars studying this important moment in history.

The Accessible Comics Collective:

We extended our work leading the Accessible Comics Collective alongside Nick Sousanis (Comic Studies, SFSU) and Yue-Ting Siu (Program in Vision Impairments, SFSU). Our cash prize competition supported five teams developing innovative approaches to accessible comic creation and design, culminating in a symposium where the winners shared their lessons learned and received live feedback from blind experts to help guide future innovations. MIT Technology Review invited Nick and Emily to produce an accessible comic titled "Comics Beyond Sight: A Highly Visual Case for Blind Access" with an audio translation produced by Longmore Institute's Shaina Ghuraya.



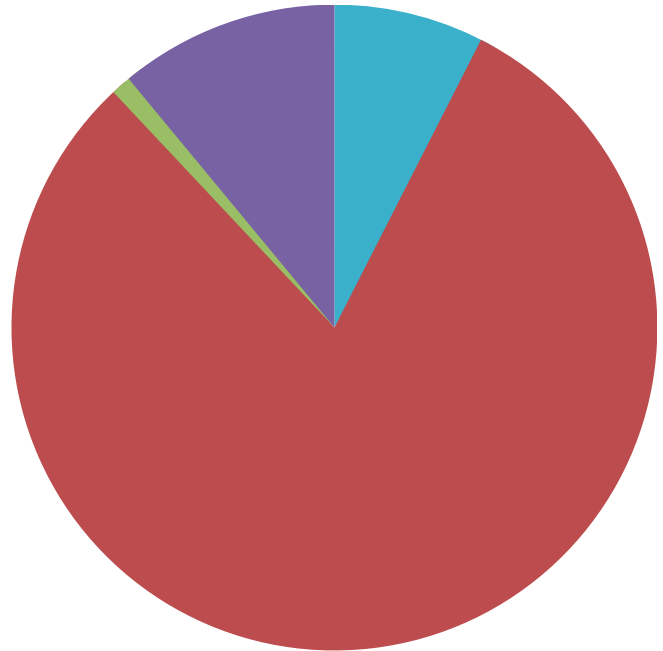
Longmore Institute Consulting:

We work to share our expertise in accessibility, film, and disability studies with a wide range of organizations through consulting work, training, and access support. Organizations we worked with this year included the American Educational Research Association, California Association of Museums, CCA Wattis Institute, Center for Genetics and Society, Chicago Film Festival, San Francisco Unified School District, SFFilm, SF Urban Film Festival, Stanford's Cantor Museum, A24, and Stanford University.

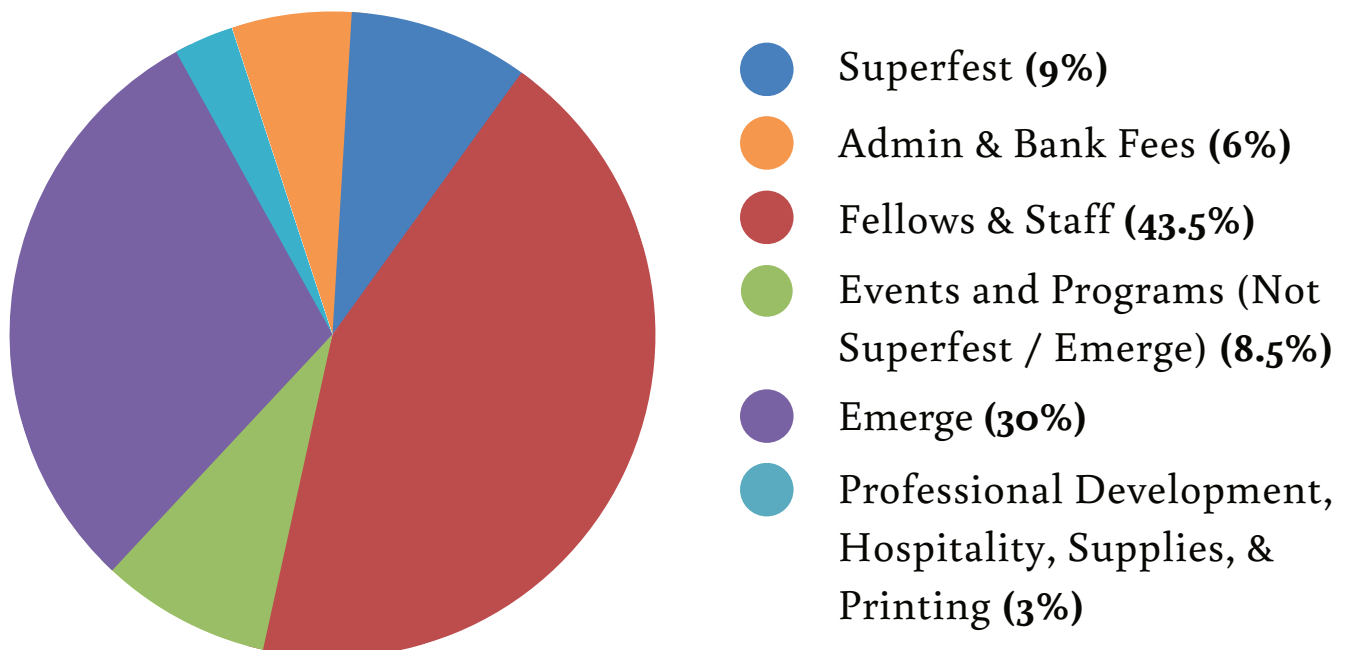
Budget

Revenue

- Donations/Sponsorships (7.5%)
- Grants (80.5%)
- Superfest Ticket Sales & Film Submission Fees (1%)
- Consulting, Honorariums, & Other Earned Income (11%)



Expenses



Donors

Appreciating Our Supporters

Our work is made possible thanks to generous supporters like you!

\$5,000+

Sally Vitello and
Guy Chriqui

\$1,000-\$4,999

Catherine J. Kudlick
Eugene R. Chelberg and
David Meissner
Joan Cadden
Laurel Lyman
Luise M. Custer
Milton and Danae
Reynolds
Richard Vaccaro and
Katherine Cameron
Stanley K. Yarnell
Sumi E. Colligan
Trevor R. and Jessica
Getz

\$500-\$999

Anonymous (1)
Ellen Longmore and
David Brown
Ellen Yamshon
Eric Zigman
Gabriel B. Ledger
Pamela M. Su
Phoebe Kwan
Sheila A. McClear

\$250-499

Anonymous (1)
Avinash A.
Chandiramani and
Erin Elgersma
Jason M. and
Abigail Porth
Justin J. Powell
Leroy M. Morishita
Lindsey Smith
Ned L. Fielden
Reid Davenport
Robert W. and
Rebecca Cherny
Russell Geoffrey
Steven M. Harris
The Carouge Family
Foundation
Wendy A. Tobias

\$1-\$249

Anonymous (7)
Alice R. Wexler
Allyson N. Ferrari
Amanda Todd and
David Owen
Angela L. Chan
Anthony Witte and
Angela Tam
Arthur Blaser and
Barbara James

Arthurlene Towner
Betty Yu and Colin
Felton
Brandon Scarth
Carol S. Wilson
Catherine M. Murphy
Center for Genetics
and Society
Chanda S. and
Lars Jensen
Dana Bolles
Daniel Lebrija
Danny T. Vang
David A. Gerber
David A. Olsher
Denise Nepveux and
David Hill
Dyana H. Vukovich
Edgar Osario
Elizabeth Travelslight
Emily Nusbaum
Emily Paras
Emily S. Beitiks
Emily Stieren
Eric Hunt
Fran Osborne
Francine Odette
Georgia Rhodes
Heather Sessler
Jeanne Argoff
Jessica Diamond
Jo H. Volkert

Donors

Appreciating Our Supporters

Our work is made possible thanks to generous supporters like you!

Jo Kurtenbach
Joan Ostrove
John Cleary
Julia C. Martin
Julie Moed
Karen Boyce
Kathy Martinez
Katie Hasson
Katja Guenther
Kevin P. O'Donnell
Letitia U. Brown
Linda Wolford
Lorrie B. Slonsky and
Larry Bradshaw
Maggie O'Brien
Marcy Darnovsky
Maria M. Kerrigan
Mariah Poitier
Marilyn C. Fichtenberg
Marilyn J. Jackson
Marjorie McGee
Martha Goddard
Matt Kaplowitz
Matt Lim
Maureen R. Fitzgerald
Meghan M. Beitiks
Melinda Zarrett
Michael J. Meloy
Michael Watson
Michelle Haring and
Shelly Conley
Mirel A. Tikkanen
Philip Ferguson

Mark Potter and Potter
Handy, LLP
Randi L. Decker
Rebecca Tasson
Rita and Sandy
Walsh-Wilson
Robyn S. Kurland
Rodney Evans
Ron Amundson
Rosemarie G Thomson
Sandra E. Burnett
Sara Bolder
Shawn T. and
Kristina Whalen
Sheraden J. Nicholau
Steve Shmanske and
Tina Marian Stevens
Susan Henderson
Tara Lockhart
Terri O'Hare
Toni Haraldsen
Tracy Koy
Vincent Lam

The following had gifts made in their honor:

Emily Beitiks
Eugene Chelberg
Catherine Kudlick
Joe Rosa
Eric Talbert
Sally Vitello

The following had gifts made in their memory:

Adreinne Asch
Rita Mae Buskirk
Christopher Disman
Lars Jensen
Linda Kahn
Paul Longmore
Tsai Shih
Anthony Tassone

Thank you to our generous corporate and private foundation support from:

American Masters
The Ford Foundation
Golden Gate Regional Foundation
Hobson/Lucas Family Foundation
The Mellon Foundation
Pixar Animation Studios
Telecare Corporation

Support the Longmore Institute!

We encourage anyone interested in donating or collaborating to contact Interim Director Emily Beitiks by email at beitiks@sfsu.edu or by phone at 415-338-6010.

Address:
1600 Holloway Avenue, Humanities Building 135/136
San Francisco, CA 94132



www.longmoreinstitute.sfsu.edu



[@LongmoreInst](https://twitter.com/LongmoreInst)



facebook.com/SFSUDisability



instagram.com/longmoreinst

